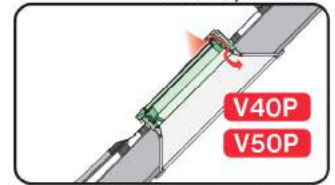
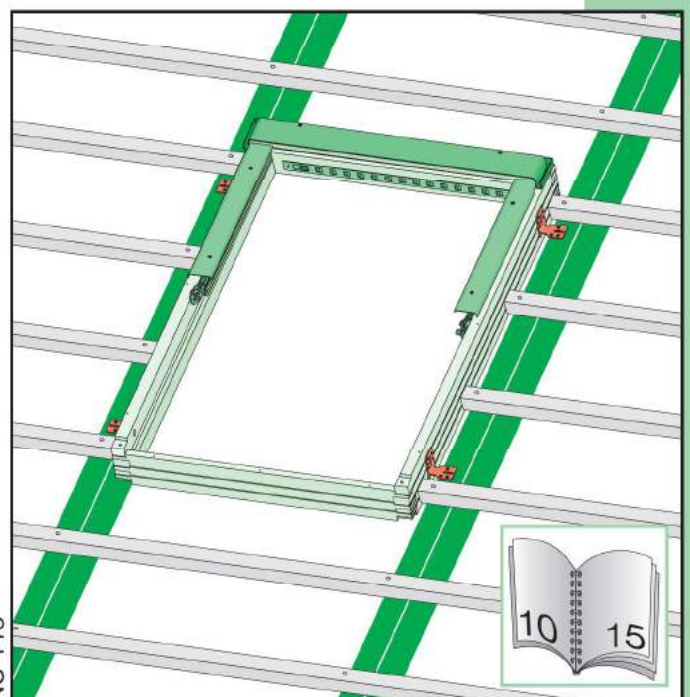
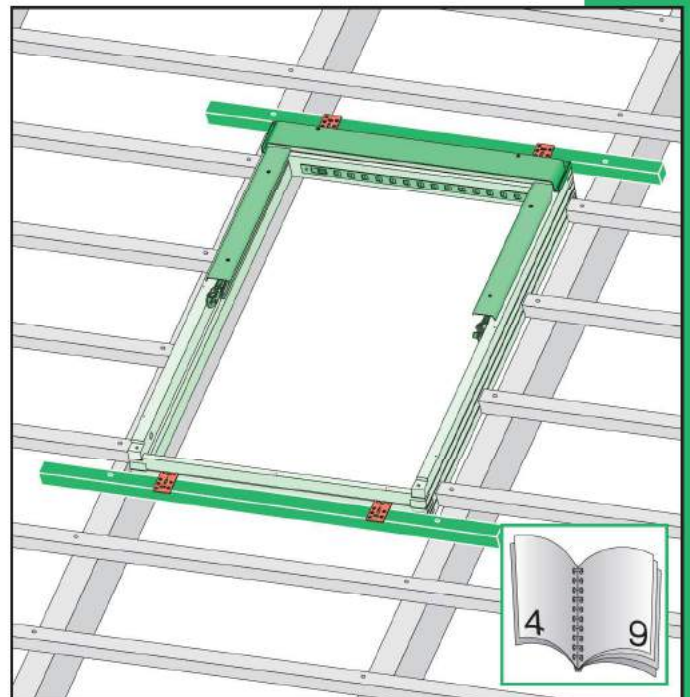


FTP-V, FTU-V

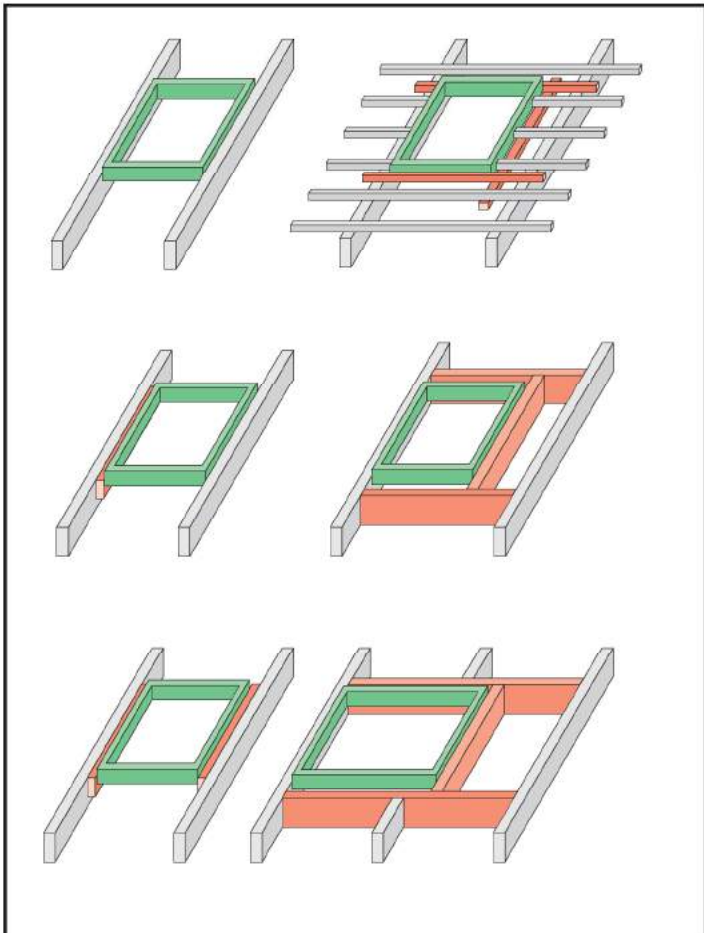
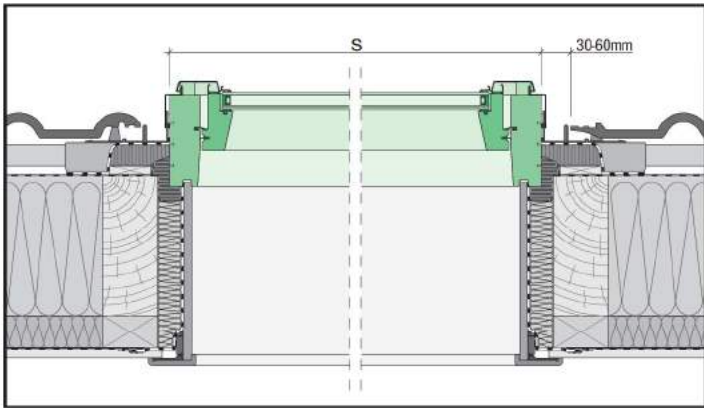
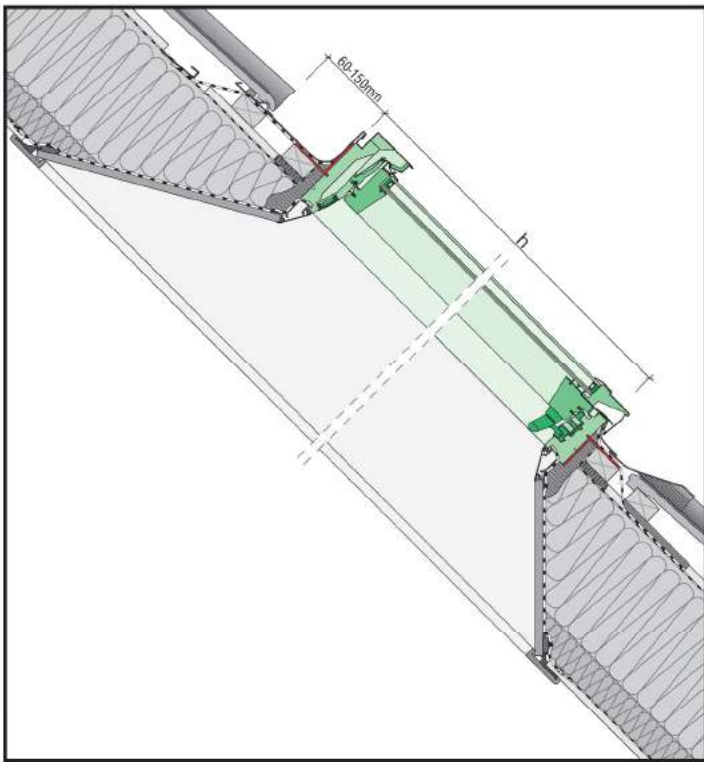


FTP-V5, FTU-V5

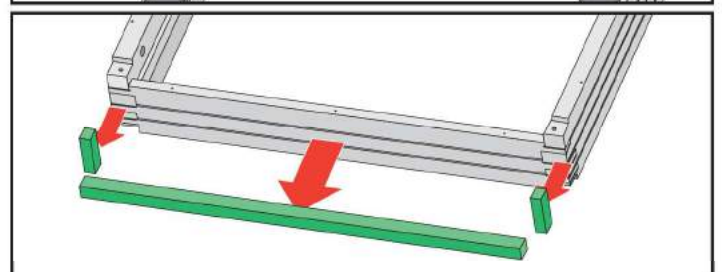
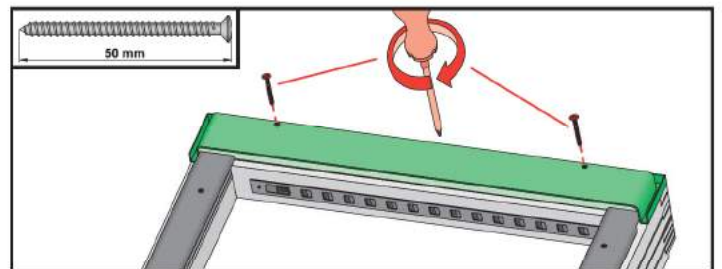
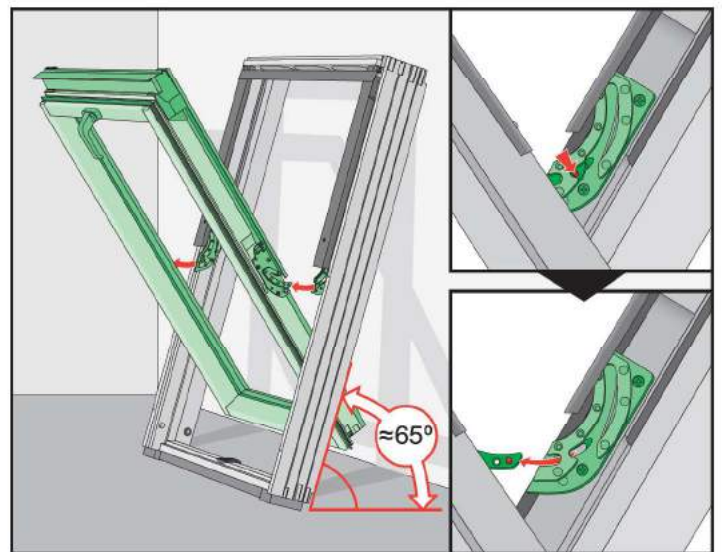
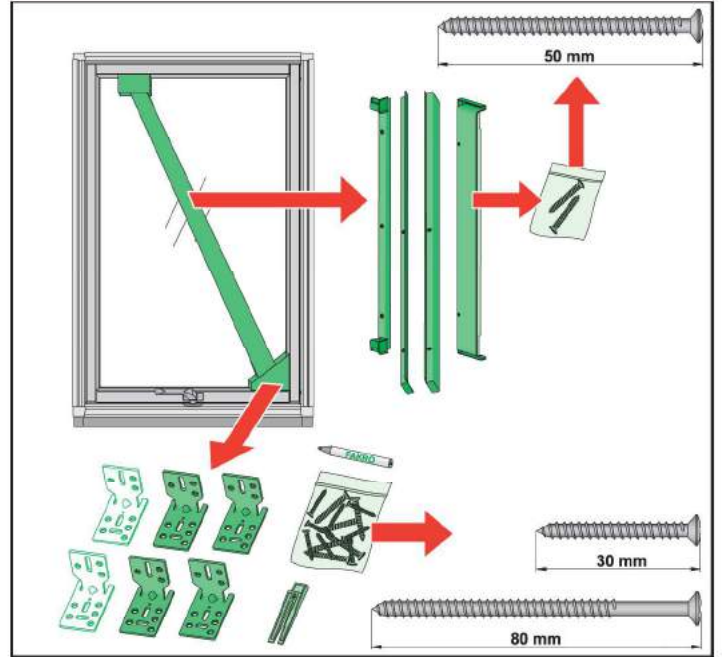
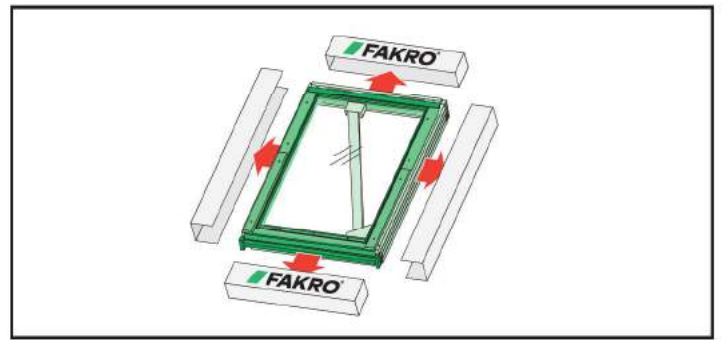


NC 146

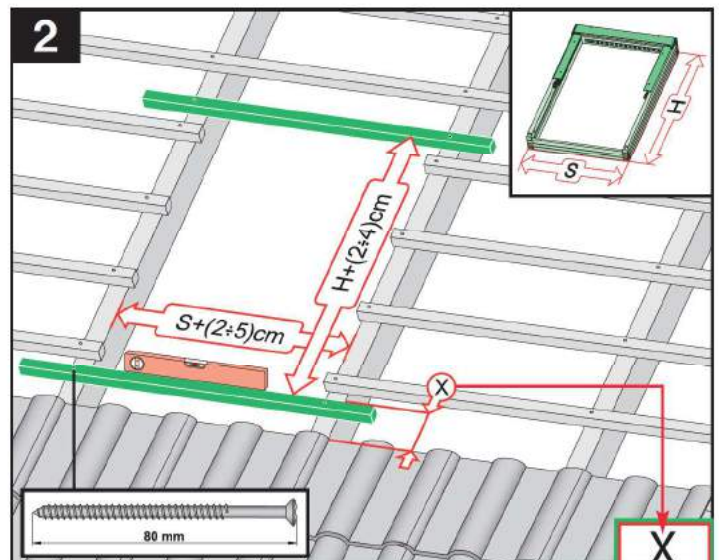
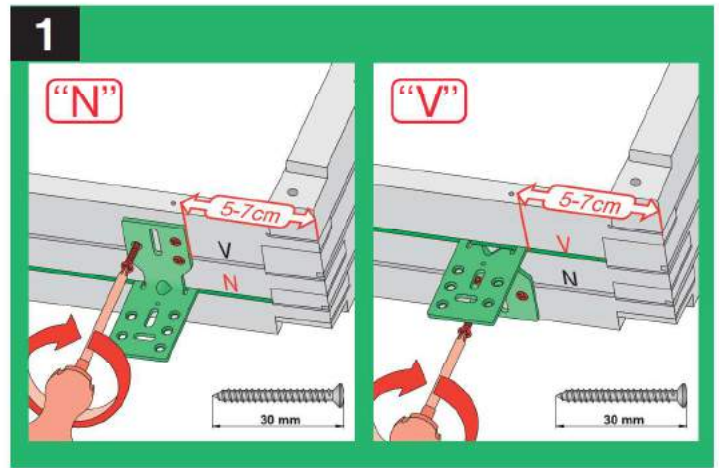
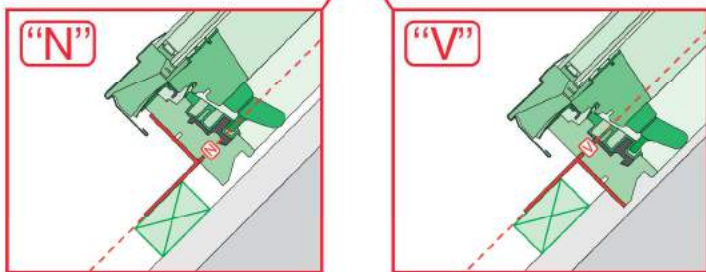
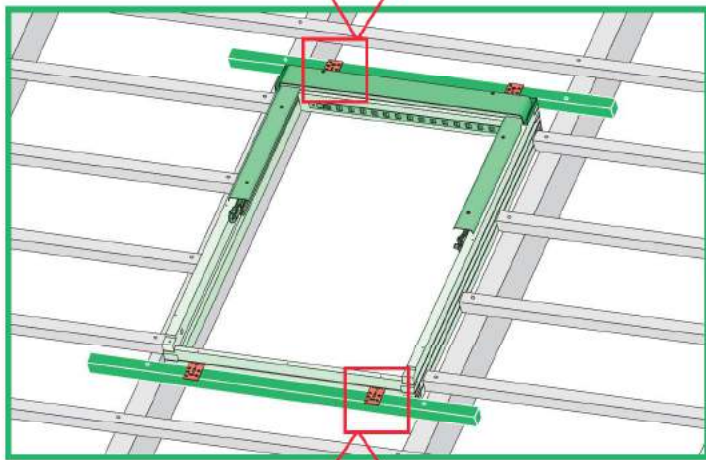
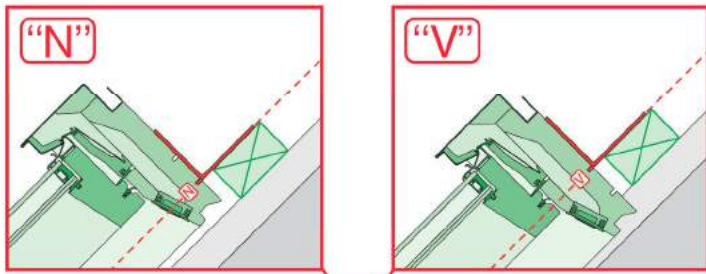
- | | | | |
|-----------|--|------------|--|
| CZ | výrobce a prodejce nenesou žádnou odpovědnost za nedodržení příslušných předpisů zákona, stavebních předpisů a bezpečnostních požadavků přes užívání výrobku, architekt, montáž nebo majitel objektu. | I | Il Produttore e il Rivenditore non potranno essere ritenuti responsabili per il mancato rispetto, da parte dell'utente del prodotto, del progettista, dell'installatore o del proprietario dell'edificio, delle leggi vigenti, nonché dei regolamenti edilizi e di quelli relativi alla sicurezza. |
| D | Hersteller und Verkäufer übernehmen keine Haftung für Nichtbeachtung entsprechender Rechts- und Bauvorschriften sowie Sicherheitsanforderungen seitens Produktbenutzer, Architekten, Monteurs oder Gebäudeeigentümers. | NL | De fabrikant en verkoper zijn niet aansprakelijk voor gevolgen bij het niet opvolgen van toepasselijke wetten, bouwvoorschriften en veiligheidsvoorschriften door de gebruiker van het product, de architect, de installateur of de eigenaar van het gebouw. |
| E | El fabricante y el vendedor no tienen ninguna responsabilidad por el incumplimiento de la ley vigente, normas de construcción y exigencias de seguridad por parte del usuario del producto, arquitecto, instalador o el propietario del edificio. | PL | Producent i Sprzedawca nie ponosi żadnej odpowiedzialności za nieprzeobrażenie stosowanych przepisów prawa, przepisów budowlanych i wymogów bezpieczeństwa przez użytkownika produktu, architekta, montażystę lub właściciela budynku. |
| FR | Le fabricant et le vendeur ne prend aucune responsabilité de ne pas respecter les lois applicables, les règlements sur les bâtiments et les exigences de sécurité par l'utilisateur du produit, l'architecte, l'installateur ou le propriétaire du bâtiment. | RU | Ни производитель, ни дистрибутор не сьт vor assume aucun fet de dispandee penitu respectarea legilor in vigoare, a legilor din domeniul constructiilor sau a măsurilor de siguranță impuse oficialilor producătorii, arhitecților, montajistilor sau proprietarilor obiectiv. |
| GB | Manufacturer and Seller shall bear no liability for failure to comply with the applicable laws, building codes and safety requirements by the user of the product, architect, fitter or owner of the building. | RUS | В случае невыполнения директором, монтажником или владельцем здания строительных правил и норм безопасности ответственность с производителя и продавца снимается. |
| H | A gyártó és a forgalmazó nem vállal semmilyen felelősséget a vonatkozó törvényi, építészeti és biztonsági előírások nem-teljesítéséért, építész, beszálló/mester vagy egyébkénti általuk nem tartásáért. | SK | Výrobca a predávca nenesou žádnú zodpovednosť za nedodržanie príslušných ustanovení zákona, stavebných predpisov a bezpečnostných požiadaviek užívateľom výrobku, architektom, montážom alebo majiteľom objektu. |



2

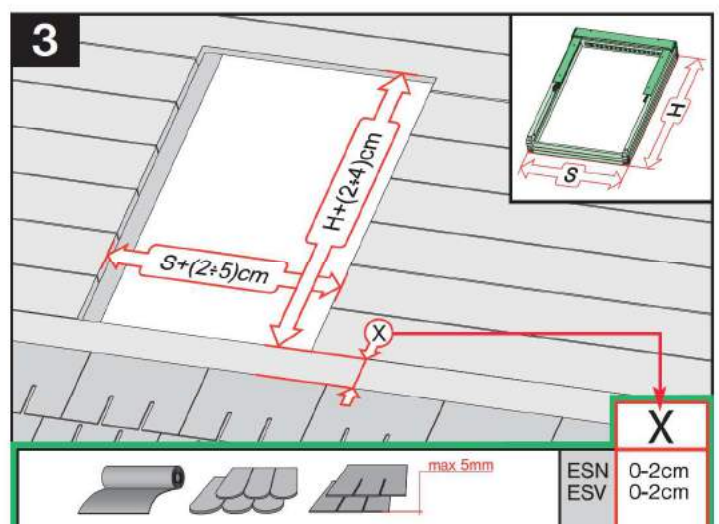


3

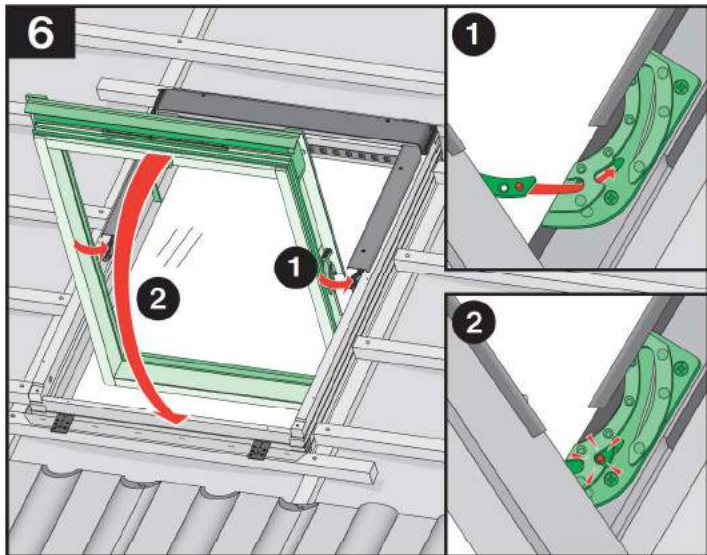
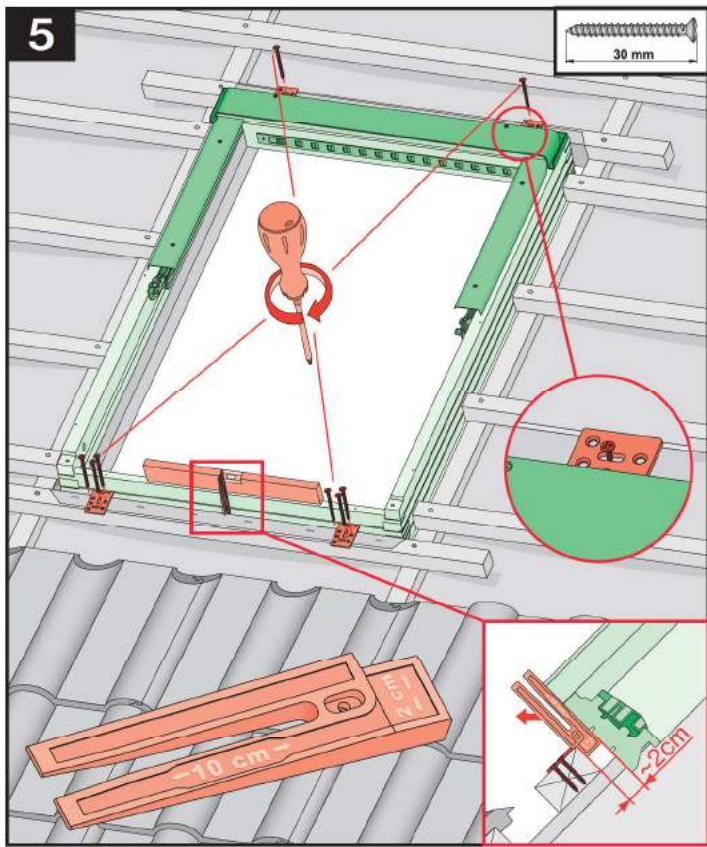
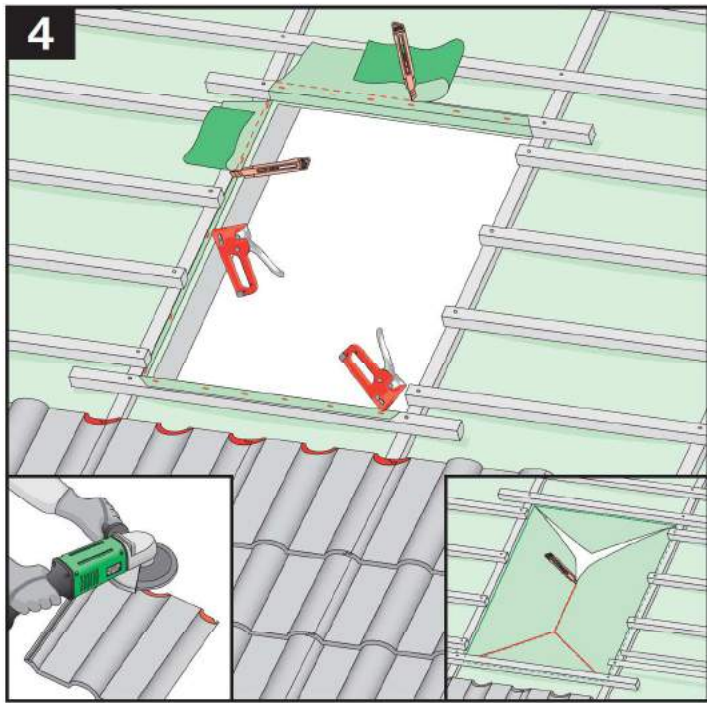


	max 90mm	EHN	7-10cm
		EHV	7-10cm
	max 45mm	EZN	6-8cm
		EZV	6-8cm
	380-420mm / 12-16mm	EGV	4cm
	380-420mm / 12-16mm	EPV	6cm
	max 5mm (V) / max 15mm (N)	ELN	0-2cm
		ELV	0-2cm
		EEN	0-2cm
		EEV	0-2cm

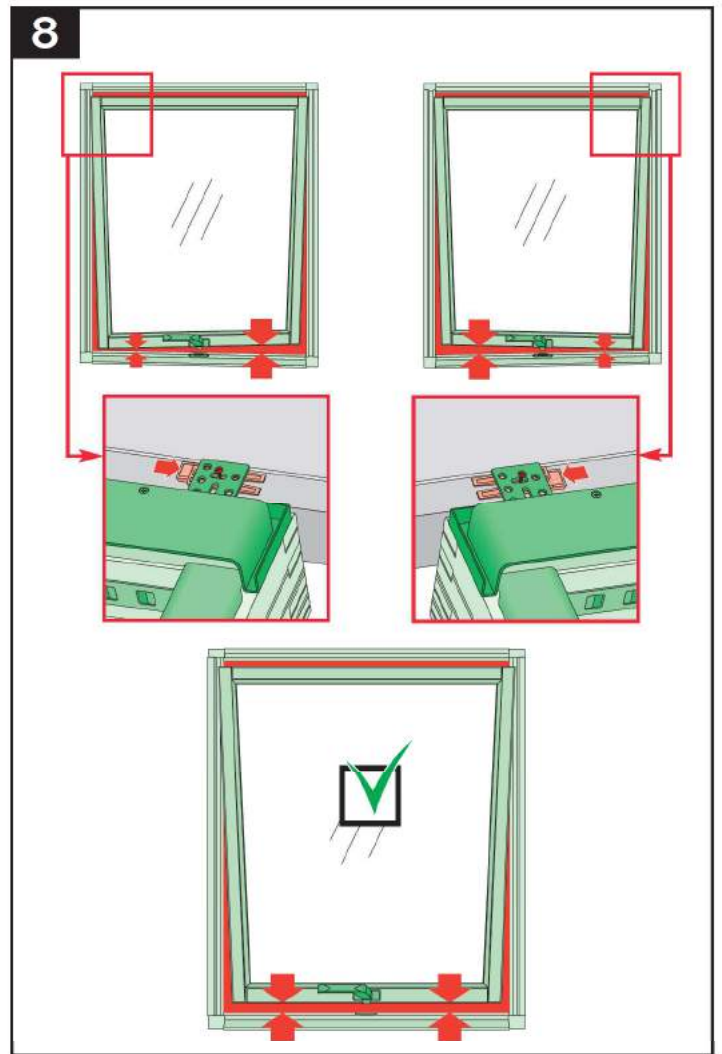
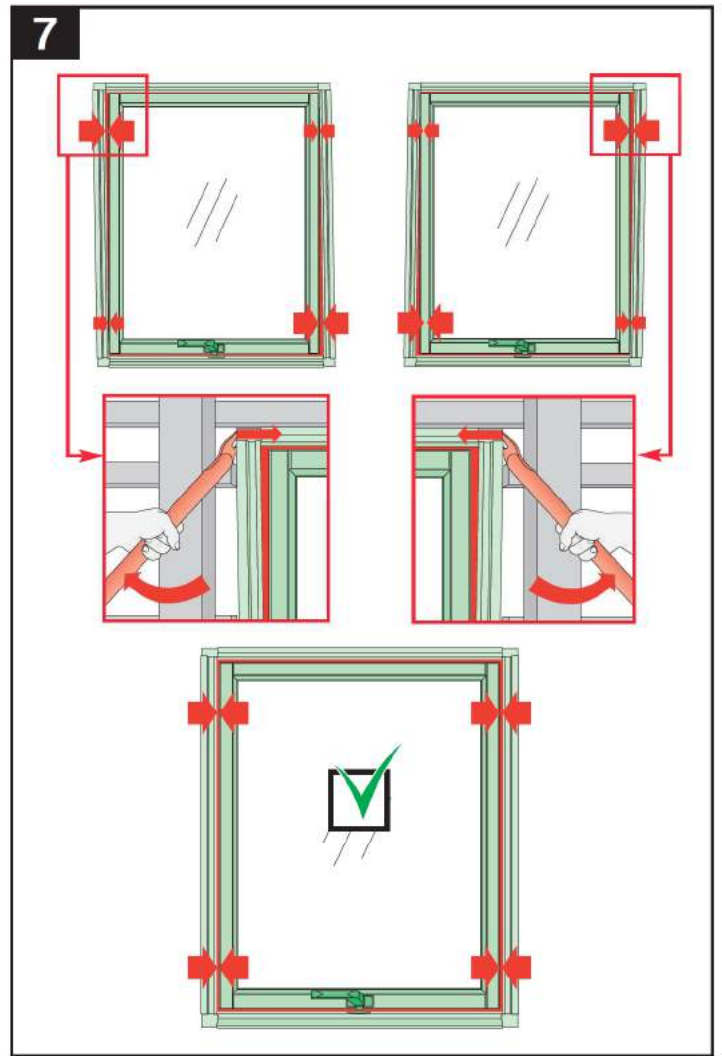
	max 90mm	EHN		15°-90°
		EHV		15°-90°
		-	-	-
	max 45mm	EZN		15°-90°
		EZV		15°-90°
		-	-	-
	max 15mm (N) / max 5mm (V)	ELN		15°-90°
		ELV		15°-90°
		-	-	-
	max 5mm	ESN		15°-90°
		ESV		15°-90°
		-	-	-



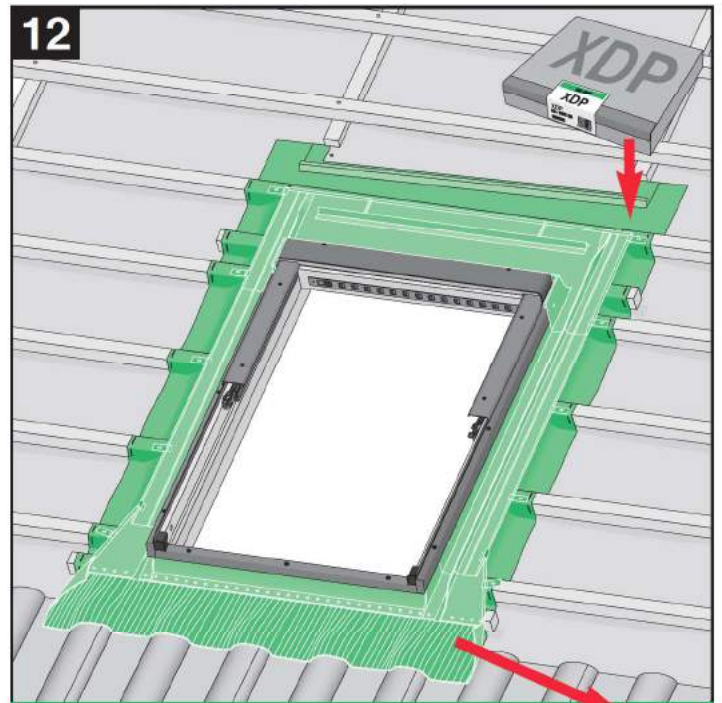
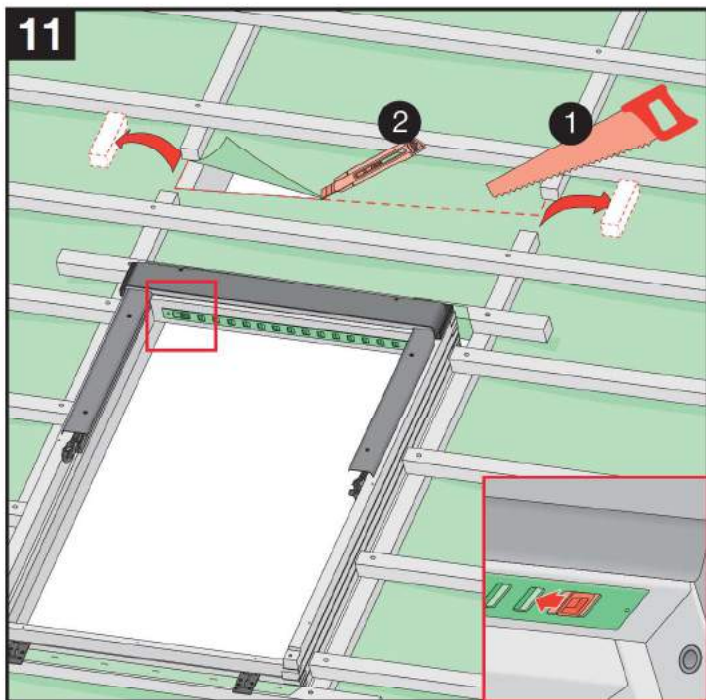
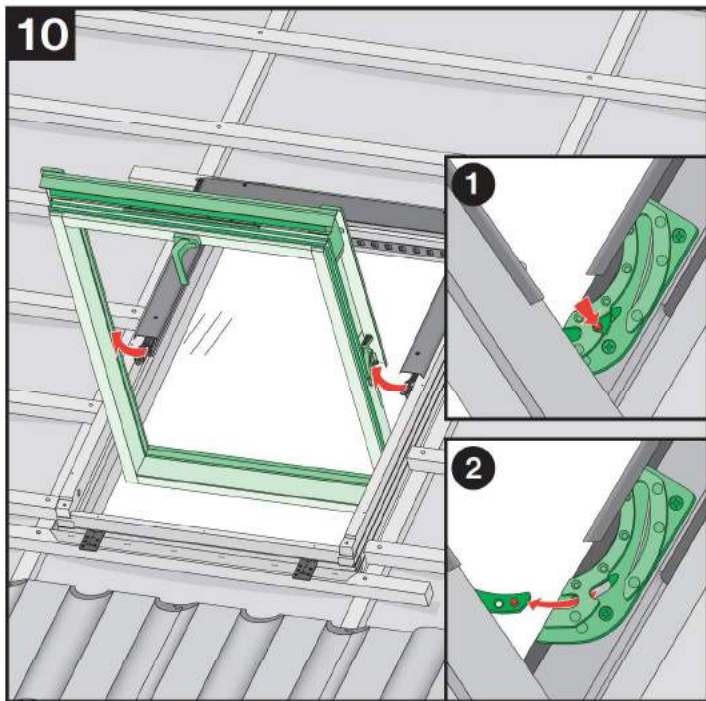
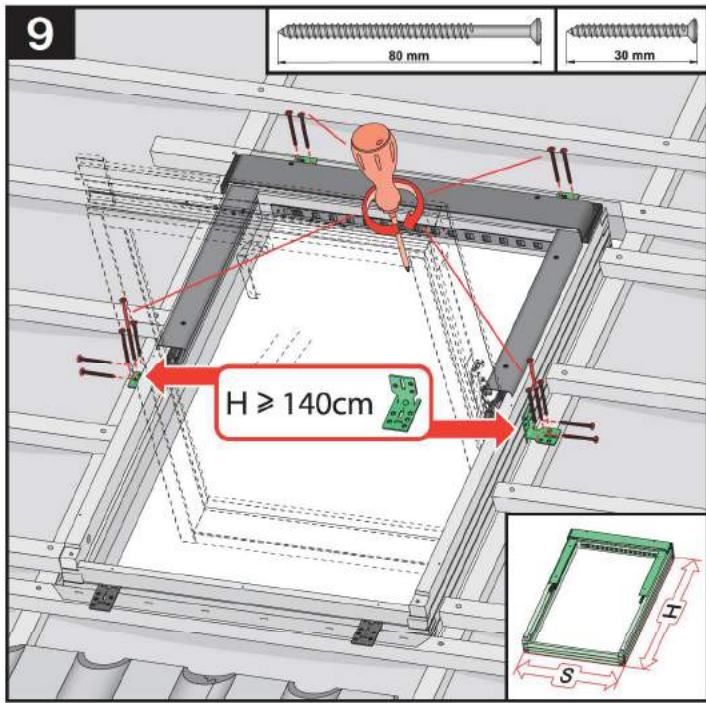
	max 5mm	ESN	0-2cm
		ESV	0-2cm



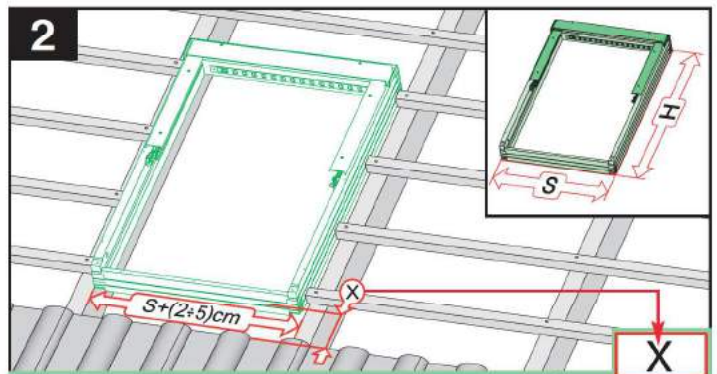
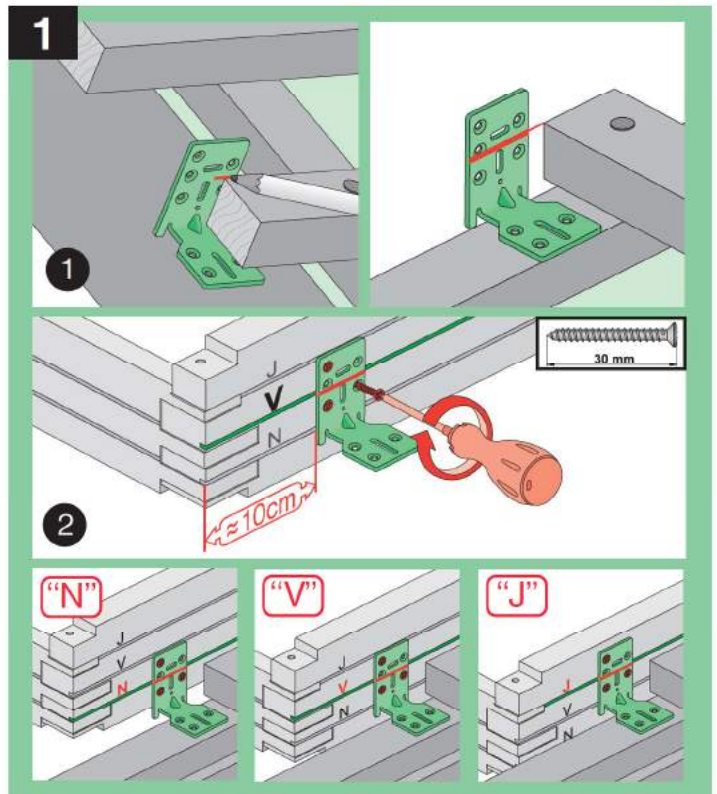
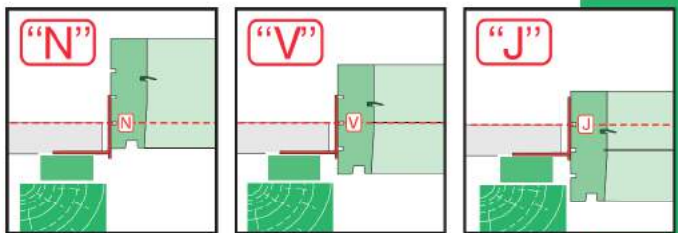
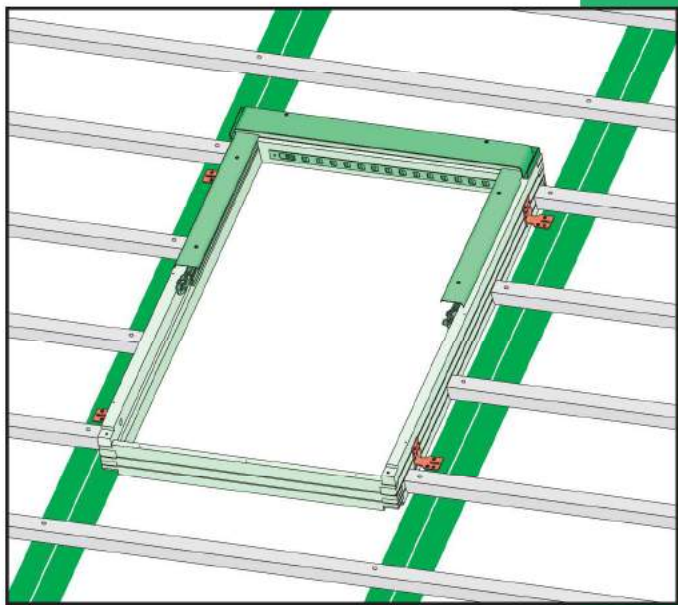
6



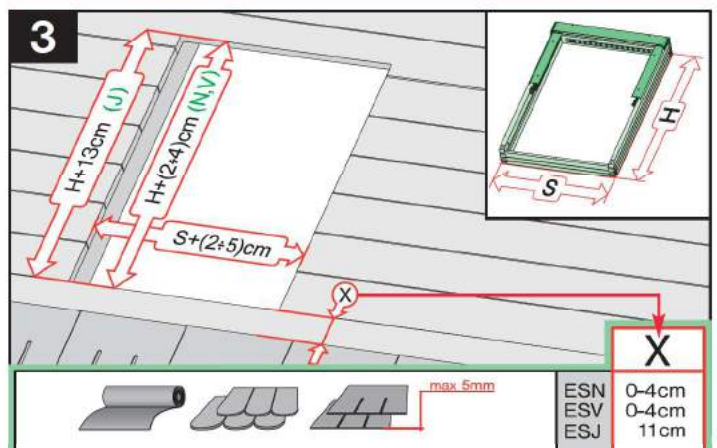
7



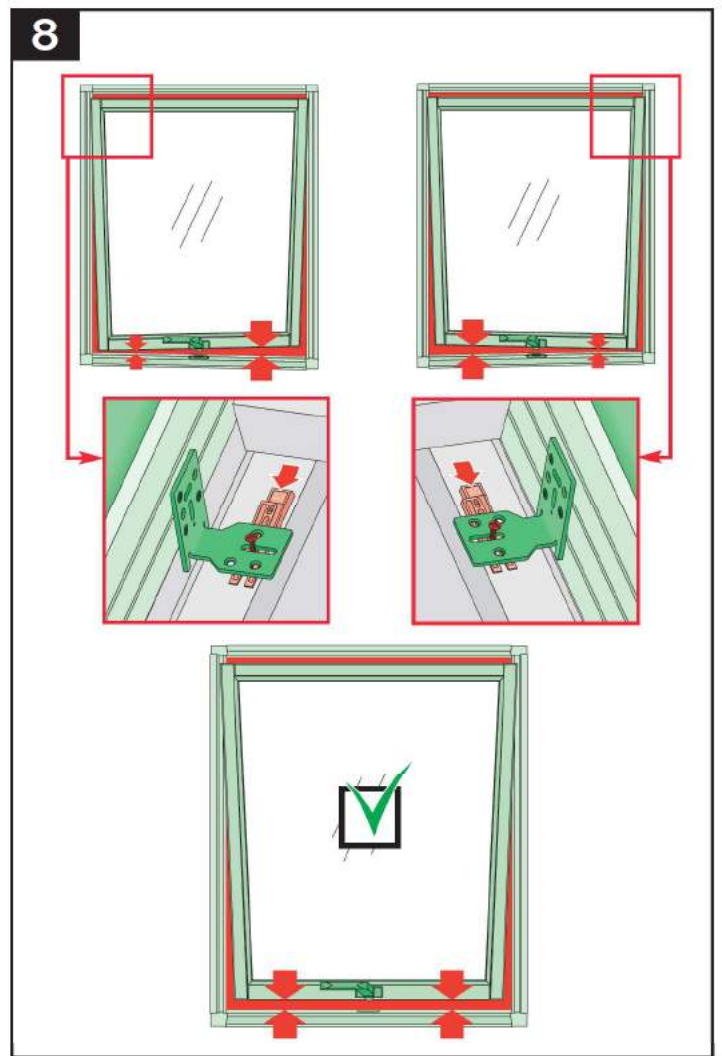
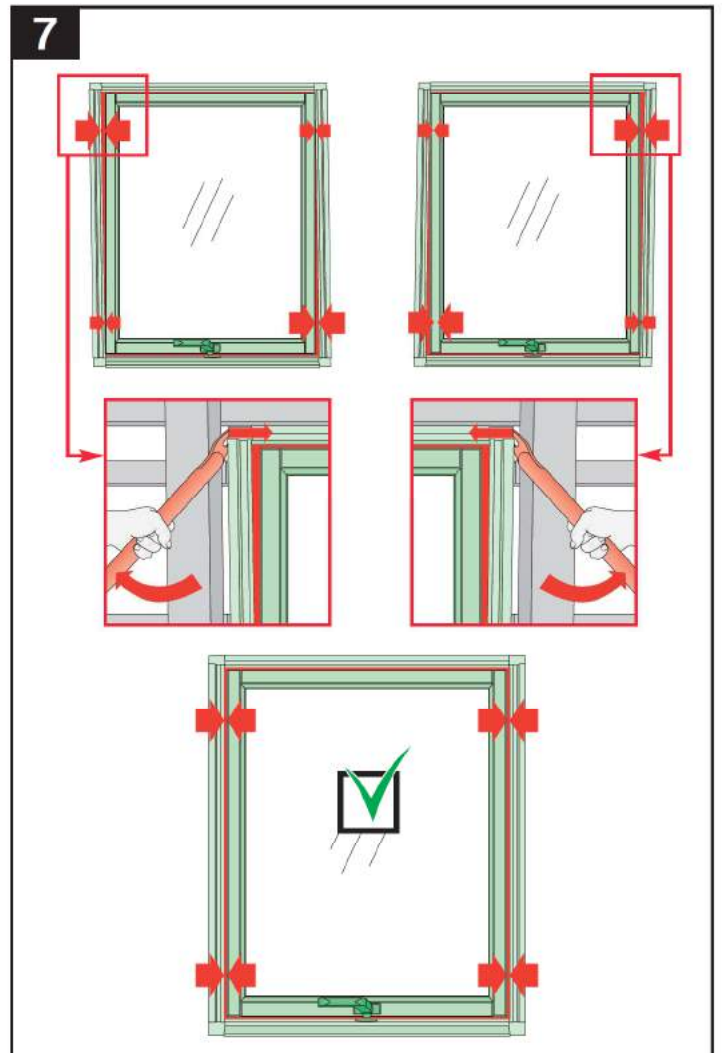
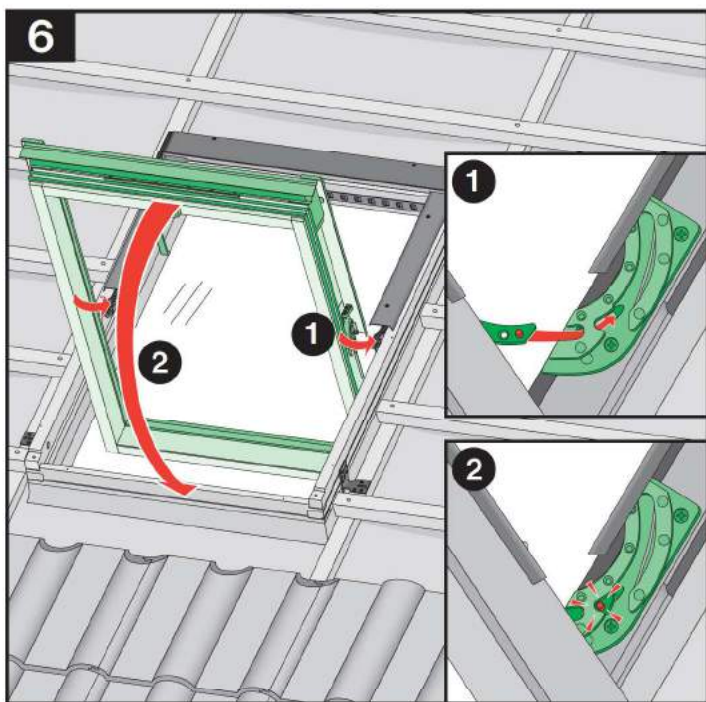
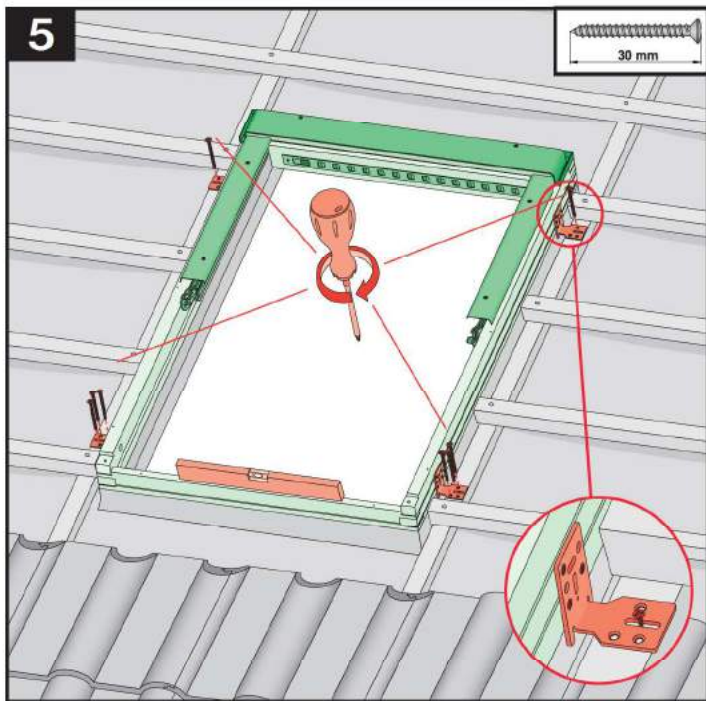
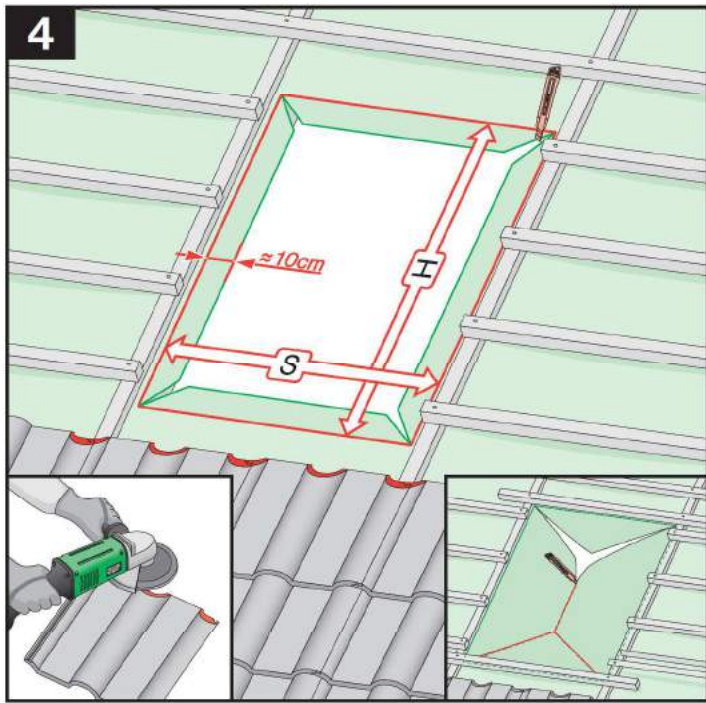
	max 90mm	EHN EHV
	max 45mm	EZN EZV
	max 5mm	ESN ESV
	360-420mm 12-16mm	EGV
	250-280mm max 18mm	EPV
	max 5mm (V) max 15mm (N)	ELN ELV
		EEN EEV

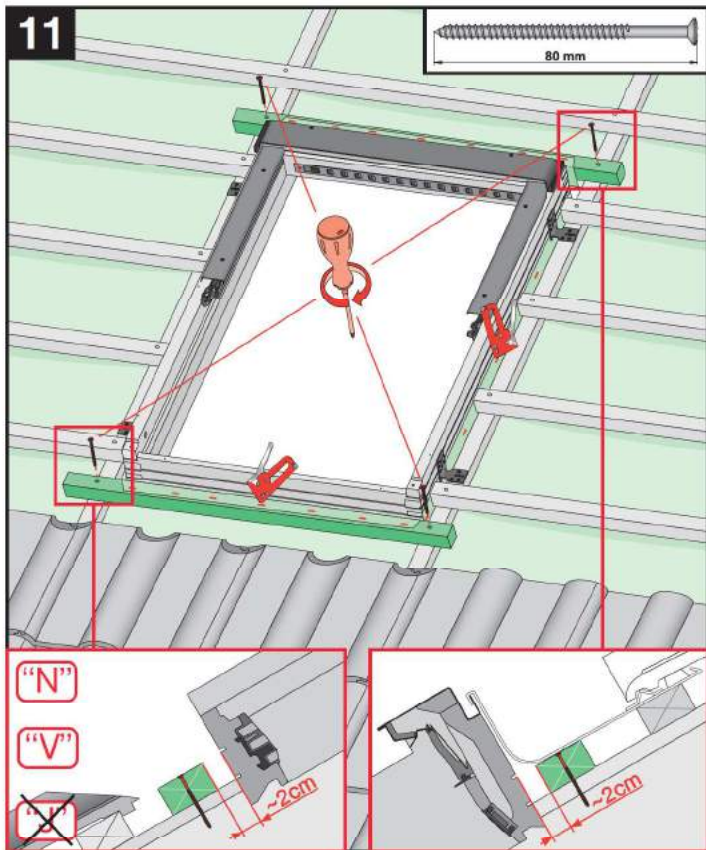
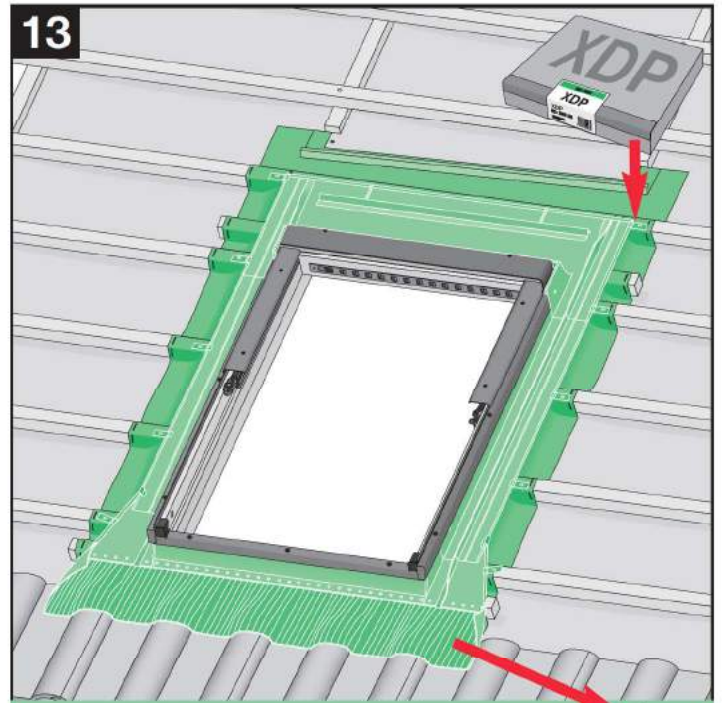
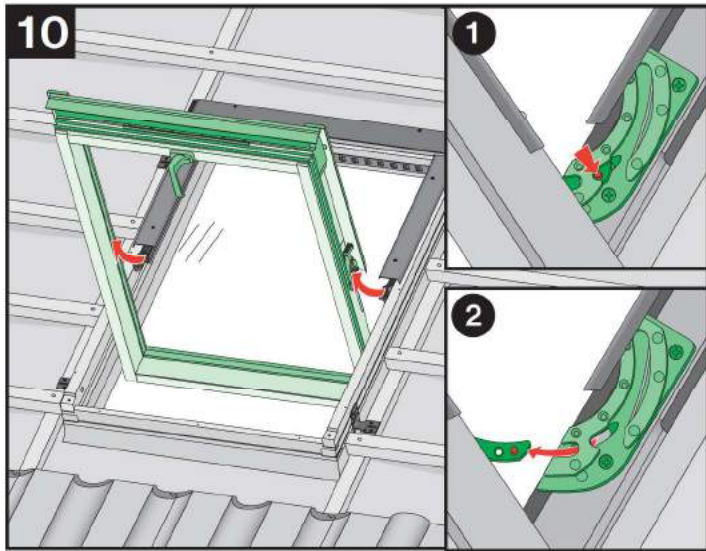
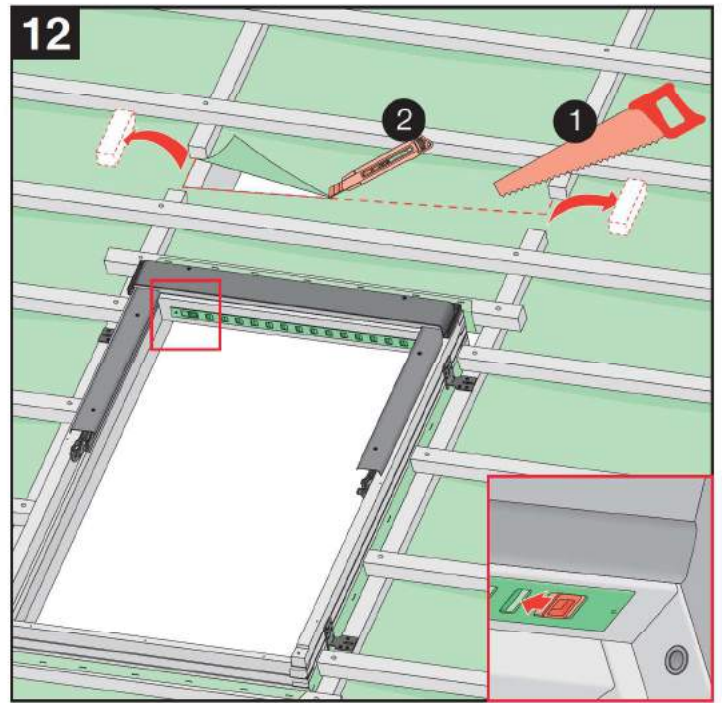
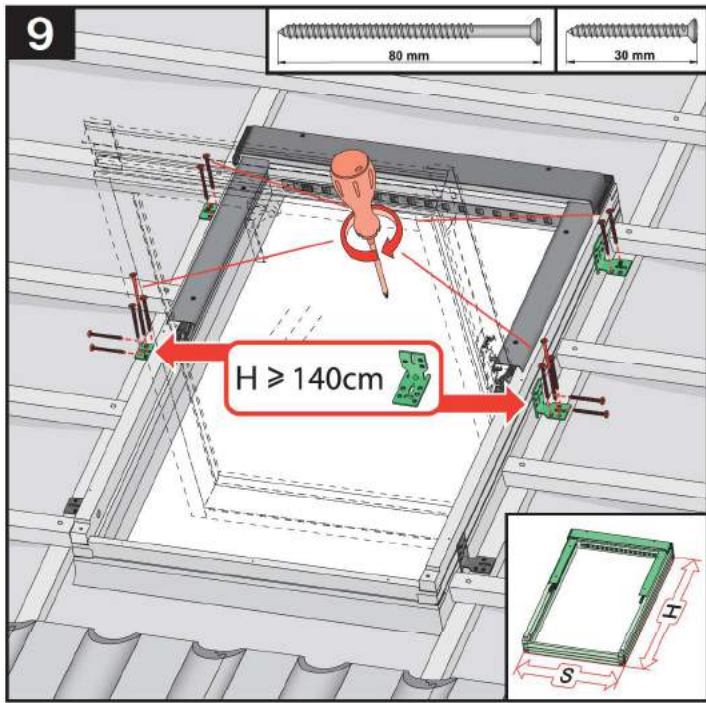


					X
	EHN	max 90mm	15°-90°	9-12cm	
	EHV		15°-90°	9-12cm	
	EZN EZV EZJ		15°-90°	8-10cm 8-10cm 20cm	
	EGV	12-16mm	6cm	6cm	
	EPV	max 18mm	8cm	8cm	
	ELN	max 15mm (N) max 5mm (V) max 5mm (J)	15°-90°	0-4cm	
	ELV		15°-90°	0-4cm	
	ELJ		20°-90°	11cm	
	EEN		0-4cm	0-4cm	
	EEV		0-4cm	0-4cm	
	EEJ		11cm	11cm	



					X
	ESN	max 5mm	15°-90°	0-4cm	
	ESV		15°-90°	0-4cm	
	ESJ		20°-90°	11cm	





	max 90mm	EHN EHV
	max 45mm	EZN EZV EZJ
	max 5mm	ESN ESV ESJ
	12-16mm 380-420mm	EGV
	max 18mm 250-280mm	EPV
	max 5mm (V,J) max 15mm (N)	ELN ELV ELJ
		EEN EEV EEJ